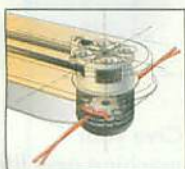


**ALUMINUM FRAME HAS A LIFETIME WARRANTY**

The PRO, PRO-XL, and SELF-PROPELLED models feature an aluminum frame that is guaranteed against cracking or breaking under normal use. SPRINT® model has a solid steel frame.

**CORD ATTACHMENT IS SIMPLE AND EASY** No tools, no knots required...plus you can choose from 6 cutting height adjustments (1-1/2" to 4") at the same time you attach your cords.

**PROTECTED BY A 2-YEAR WARRANTY** against defects in materials and workmanship (in residential use).



Anti-wrap design, instant cord attachment and rugged cast-aluminum bearing assembly make the patented Trimmer Head better!

MADE  
in the  
USA

Trim and mow where other machines can't. Using flexible, long-lasting nylon cutting cords, the DR® TRIMMER/MOWER cleans up all those areas where you'd never take an ordinary steel bladed mower.



**Low Emissions Engine Upgrade Required for California Buyers**

California State law requires CARB Certified engines on all TRIMMER/MOWERS shipped to California. Also available for users in other states. **Add \$24.95**



6.25 SPRINT®

6.50 PRO

8.25 SELF-PROPELLED

8.25 PRO-XL

**Extend your machine's standard 2-Year Warranty!**

Residential use only.



- 1-Year Extended Warranty (3 yrs total) ~~\$59.95~~ **NOW FREE!**  
 2-Year Extended Warranty (4 yrs total) ~~\$89.95~~ **NOW \$30!**  
 3-Year Extended Warranty (5 yrs total) ~~\$109.95~~ **NOW \$50!**

**ORDER BY 5/12 FOR:**

**FREE SHIPPING**  
**FREE EXTENDED WARRANTY**

**PLUS — EASY FINANCING AVAILABLE**

See Order Form



| MODEL   | ENGINE  | WHEELS    | FRAME   | ENGINE WARRANTY                                       | PRICE   | SAVINGS                         |
|---|---|-----------|---|---|---|---------------------------------|
| <b>6.25 SPRINT®</b><br>#TRM625M<br>& #TRM625E | 6.25 FT. LBS./TORQUE<br>BRIGGS & STRATTON<br>QUANTUM  | 14" RESIN | 14-GAUGE<br>STEEL   | 2 YEARS RESIDENTIAL<br>USE; 90 DAYS<br>COMMERCIAL USE | Man-Start List \$569<br><b>\$512</b><br>Elec-Start List \$669<br><b>\$602</b> | <b>SAVE<br/>UP TO<br/>\$67!</b> |
| <b>6.50 PRO</b><br>#TRM650M<br>& #TRM650E     | 6.50 FT. LBS./TORQUE<br>BRIGGS & STRATTON<br>QUANTUM  | 16" RESIN | LIGHTWEIGHT<br>CAST<br>ALUMINUM WITH<br>LIFETIME WARRANTY | 2 YEARS RESIDENTIAL<br>USE; 90 DAYS<br>COMMERCIAL USE | Man-Start List \$769<br><b>\$692</b><br>Elec-Start List \$869<br><b>\$782</b> | <b>SAVE<br/>UP TO<br/>\$87!</b> |
| <b>8.25 PRO-XL</b><br>#TRM825E                | 8.25 FT. LBS./TORQUE<br>BRIGGS & STRATTON<br>INTEK OHV WITH<br>CAST-IRON CYLINDER<br>SLEEVE AND<br>OIL FILTER | 16" STEEL | LIGHTWEIGHT<br>CAST ALUMINUM<br>WITH LIFETIME<br>WARRANTY | 2 YEARS RESIDENTIAL<br>USE; 1 YEAR<br>COMMERCIAL USE  | Elec-Start List \$999<br><b>\$899</b>   | <b>SAVE<br/>\$100!</b>          |
| <b>8.25 SELF-PROPELLED</b><br>#TRM825S        | 8.25 FT. LBS./TORQUE<br>BRIGGS & STRATTON<br>INTEK OHV WITH<br>CAST-IRON CYLINDER<br>SLEEVE AND OIL FILTER    | 12" STEEL | LIGHTWEIGHT<br>CAST<br>ALUMINUM WITH<br>LIFETIME WARRANTY | 2 YEARS RESIDENTIAL<br>USE; 1 YEAR<br>COMMERCIAL USE  | Elec-Start List \$1,299<br><b>\$1,169</b>                                     | <b>SAVE<br/>\$130!</b>          |



### Protect trees and plants from accidental overtrimming

The DR® TRIMMER/MOWER is easier to control than a handheld trimmer, but its extra power can cause damage in sensitive areas...around trees or garden borders, against siding or fence posts. The TrimSafe Guard attachment will prevent accidental girdling of trees or overtrimming without slowing you down. With a full length of cutting cord, the TrimSafe Guard will leave a 1"-wide protective buffer around anything you're trimming. Goes on/comes off in less than 2 minutes. Heavy-duty steel construction.

**#24060 TrimSafe Guard \$29.95**

*Fits all models with a 4-bolt pattern on the front frame, as shown.*



### Trimmer cutting cord breaking off or pulling loose?

If the cutting cord for your DR® TRIMMER/MOWER is breaking quickly or if it's slipping out of the Trimmer Head, it may be time to replace the Trimmer Line Plates. Older style line plates can wear out after many years and cause the cutting cord to wear prematurely and slide out. With a set of new Line Plates your cutting cords will remain in place in even the toughest trimming and mowing conditions, and the cord will last longer, too. These new plates also make it easier than ever to install and replace cutting cords. For use with 155 mil and 175 mil cutting cord only.

**#26364 Trimmer Line Plates (4) \$29.95**

*For models purchased before 2/1/01*

**#26370 Trimmer Line Plates (6) \$44.95**

*For models purchased on or after 2/1/01*



## Get 4 Customer Favorites together and SAVE!

### ACCESSORIES VALUE PACKAGE #1

Save up to \$37.85 versus purchasing separately!

#### Here's what you'll get:

- **12" BEAVER BLADE® PACKAGE** (\$89.95)  
*Cut brush and trees up to 3" thick*
- **MAINTENANCE KIT** (\$39.95 - \$49.95)  
*Everything you need for a tune-up*
- **MAINTENANCE METER** (\$39.95)  
*Tells you when to change oil and air filters*
- **80' ROLL OF 175 mil CORD** (\$17.95)  
*The best cord available, and a lot of it*

**#19727 DR® TRIMMER/MOWER Accessories Value Package #1 \$149.95**

### ACCESSORIES VALUE PACKAGE #2

Save \$32.85 versus purchasing separately!

#### Here's what you'll get:

- **OIL EXTRACTOR** (\$44.95)  
*Drain oil easily and without the mess*
- **TRIMS SAFE GUARD** (\$29.95)  
*Prevent accidental overtrimming*
- **CORD CADDY** (\$19.95)  
*Attaches to your machine, holds extra cord*
- **80' ROLL OF 175 mil CORD** (\$17.95)  
*The best cord available, and a lot of it*

**#27757 DR® TRIMMER/MOWER Accessories Value Package #2 \$79.95**

**NEW!**



Give your machine new life with a fresh battery

*If your machine's engine doesn't turn*

over quickly or if the battery no longer takes a charge, it may be time for a new battery. Installing a new one will boost the starting power of your engine, especially on cold mornings and after it has been sitting awhile. Batteries are sealed and completely maintenance-free.

**#24749 DR® TRIMMER/MOWER Battery \$39.95**

*(2000 and newer SPRINT® models and 2001 and newer PRO & COMMERCIAL models)*

**#14135 DR® TRIMMER/MOWER Battery \$39.95** (all other models)

**#12541 Battery Charger \$19.95 #12751 Large Battery Clips \$9.95**



### Cover protects your TRIMMER/MOWER

This custom-fit cover is made of rugged 600 Denier polyester. Keeps your machine clean and dust-free. Adjustable 1" straps with buckle.

**#15804 Protective Cover \$59.95**

**Customer Favorite!**

### Performance-Improving Trimmer Head!

- **NO-WRAPPING/NO-TANGLING** wide-body design!
- **INSTALLS EASILY** with simple tools!
- **INSTANT, NO-TOOLS CUTTING-HEIGHT ADJUSTMENT!**
- **INCLUDES NEW** brake, pulley, Mow-Ball® Support, and bearings!
- **Compatible with 12" BEAVER BLADE®**

**#21170 Wide-Body Trimmer Head for SPRINT® models \$99**

**#25228 Wide-Body Trimmer Head \$99**

*(Only for models purchased prior to Spring 2000. Please call to order. Not available for COMPACT models. SPRINT® model Trimmer Head does not include a brake and can not be used with BEAVER BLADE®.)*





## ACCESSORIES



## MAINTENANCE KITS

Our Maintenance Kits include the most important items you'll need to keep your machine running like new — in one convenient package. Kits include: belt, engine oil, fuel stabilizer, air filter(s), spark plug, oil filter (as necessary) and a nylon Mow-Ball® Support.

- #19454 DR® TRIMMER/MOWER Maintenance Kit (6.25 SPRINT & 6.50 PRO models) \$39.95
- #19459 DR® TRIMMER/MOWER Maintenance Kit (8.25 COMMERCIAL model) \$44.95
- #20388 DR® TRIMMER/MOWER Maintenance Kit (8.25 Self-Propelled model) \$49.95

*Note: Please call for older models*

## BEAVER BLADE® cuts trees up to 3" thick

The patented BEAVER BLADE® Attachment, which easily installs on any DR® TRIMMER/MOWER (except COMPACT and pre-2000 SPRINT® models), allows you to cut brush and even small trees up to 3" thick! The chainsaw cutting action is fast, with minimal binding. Easy to sharpen in the field.



- #12539 12" BEAVER BLADE® \$69.95  
Cuts saplings up to 3" in diameter (5" in diameter on pre-2001 PRO and COMMERCIAL models).
- #12540 12" BEAVER BLADE® Package \$89.95  
Includes heavy-duty Aluminum Mow-Ball® Support plus sharpening file.



## MOW-BALL® Support designed for use with the BEAVER BLADE®

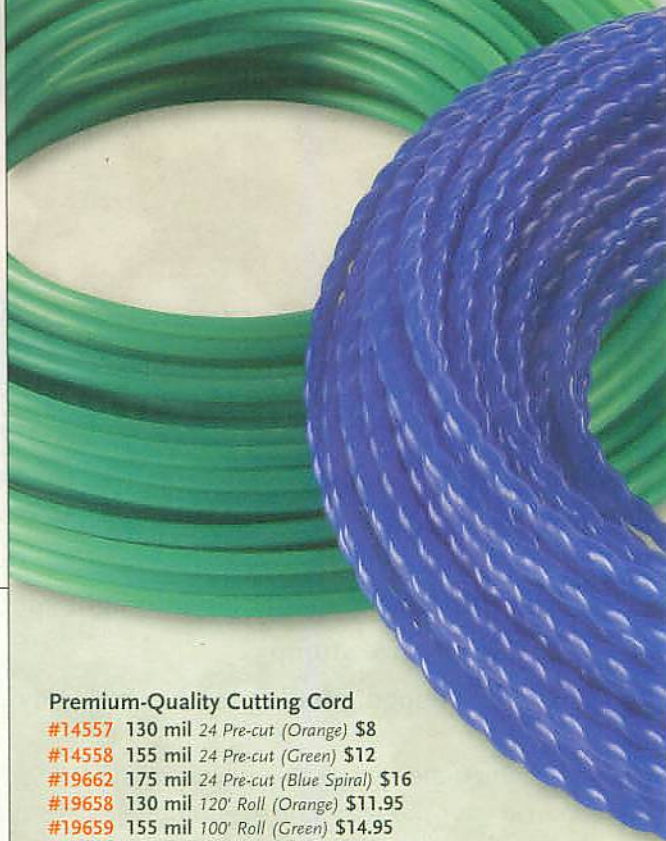
Our heavy-duty cast-aluminum Mow-Ball® Support should always

be used with the BEAVER BLADE® Attachment, due to the extra heat that can be generated when sawing.

- #12113 Aluminum Mow-Ball® Support \$24.95

## ALWAYS INSIST ON GENUINE DR CUTTING CORD!

Our Cutting Cord is formulated specifically for the DR® TRIMMER/MOWER...



## Premium-Quality Cutting Cord

- #14557 130 mil 24 Pre-cut (Orange) \$8
- #14558 155 mil 24 Pre-cut (Green) \$12
- #19662 175 mil 24 Pre-cut (Blue Spiral) \$16
- #19658 130 mil 120' Roll (Orange) \$11.95
- #19659 155 mil 100' Roll (Green) \$14.95
- #19660 175 mil 80' Roll (Blue Spiral) \$17.95

*Note: Orange cord is not for machines with serial #111475 and higher.*

## Trimmer cord holder keeps extra cord at hand!

Now you'll never run out of cord while on the job! The Cord Caddy mounts on the handlebar of your DR® TRIMMER/MOWER and keeps dozens of cutting cords within easy reach. Attaches easily with a screwdriver (hardware included). 24" long x 1-1/2" diameter. Cutting Cord not included.

- #21642 Cord Caddy \$19.95



## MAINTENANCE METER

Records hours of use, engine RPM, and alerts you to change the oil and clean or replace filters.

- #19945 Hour/RPM/Maintenance Meter \$39.95

**Customer Favorite!**





# MAKE TREE STUMPS DISAPPEAR!

- Highly portable, for getting into tight spots
- Tackle any size stump
- Carbide-tipped grinding teeth cut cleanly

Get behind the remarkable power of the DR® STUMP GRINDER and rid your property of tree stump eyesores quickly and completely. Thanks to a world-class Subaru engine and a carbide-tipped cutting head, the DR® STUMP GRINDER gives anyone the power to do a professional-quality job. Compact and maneuverable, the DR® STUMP GRINDER can operate most anywhere. The adjustable handlebars keep the operator comfortably in control. And a simple, rugged design, with few moving parts, means this machine will be around for many years of fast stump removal.



## YOU'LL NEVER KNOW THE STUMP WAS THERE!



BEFORE



AFTER

### JUST PIVOT THE MACHINE FROM SIDE TO SIDE AND SHAVE THAT STUMP AWAY!

Position the DR® STUMP GRINDER over a stump, lock one wheel in place with the wheel brake, engage the cutting head, and pivot easily from side to side, shaving an inch or so with each pass. Once you've ground through everything you can reach from one position, you just release the brake, reposition, lock in, and resume grinding!



**FLIP-UP BELT COVER** Protects the belt and pulleys, then flips out of the way for easy access. Self-adjusting belt tensioner eliminates need for operator adjustment.

### WORLD CLASS ENGINE PROVIDES UNMATCHED DURABILITY

The Subaru engine is the first air-cooled engine in the world to use auto-style overhead cam technology. Steel cam and gears replace rubber timing belts and plastic gears found in other engines, for longer engine life. Overhead cam design...cast-iron cylinder sleeve...and superior lubrication.



**FREE**  
SPARE SET OF  
CUTTER TEETH  
\$99.95  
value!

### CARBIDE-TIPPED STEEL TEETH

9 easily-replaceable teeth are tipped with mining grade tungsten carbide...the same material used for drilling through bedrock.

MADE  
in the  
USA

### FREE MAINTENANCE METER INCLUDED!

Monitor engine hours and oil and filter change schedules.

**BIG TIRES ROLL OVER  
ROUGH TERRAIN** These lugged high-flotation tires make for easy transport and give the machine full support during operation.

ORDER BY 5/12 FOR:

**FREE SHIPPING**  
FREE EXTENDED WARRANTY

**PLUS —  
EASY FINANCING  
AVAILABLE**  
See Order Form



### NEW 9 HP MODEL FOR SMOOTHEST PERFORMANCE

With more horsepower and torque the new PRO model can take a larger "bite" when grinding. This extra muscle also allows the engine to operate more smoothly at the maximum grinding speed.



Item #STG060M **6 HP PREMIER** Manual-Start **\$1,799** List \$1,999

ENGINE: 6 HP Subaru overhead cam with cast-iron cylinder sleeve

ENGINE WARRANTY: 2 yrs. residential/1 yr. commercial

MACHINE WARRANTY: 2 yrs. residential; 90 days commercial

Item #STG090M **9 HP PRO** Manual-Start **\$2,159** List \$2,399

ENGINE: 9 HP Subaru overhead cam with cast-iron cylinder sleeve

ENGINE WARRANTY: 3 yrs. residential/3 yrs. commercial

MACHINE WARRANTY: 2 yrs. residential/90 days commercial

#26532 Replacement Teeth (set of 9) **\$99.95**

#26817 Maintenance Kit, 6 HP Premier **\$49.95**

#27340 Maintenance Kit, 9 HP PRO **\$49.95**

Includes engine oil, belt, air filter, spark plug, and STABIL fuel conditioner.

#15804 Protective Cover (not shown) **\$59.95**

Extend your machine's standard 2-Year Warranty!  
Residential use only.

COVERAGE  
UP  
TO  
**5**  
YEARS!

1-Year Extended Warranty (3 yrs total) ~~\$79~~ **NOW FREE!**

2-Year Extended Warranty (4 yrs total) ~~\$129~~ **NOW \$50!**

3-Year Extended Warranty (5 yrs total) ~~\$159~~ **NOW \$80!**



# WHY PAY FOR



Solar Hot Water Made Simple.

## Proven and Time-Tested in Tens of Thousands of Homes

The design and components used in the Sunward System have proven themselves for over 25 years, providing free, solar-heated water in tens of thousands of homes in some of the harshest, most unlikely solar energy locations in North America — many as far north as Newfoundland.

Now, for the first time ever, Sunward — an affiliate of DR Power Equipment — brings this same technology to the U.S. (where the angle of the sun's rays is even friendlier)!

### Why Solar Hot Water?

#### Your Best First Step to Energy Independence

Most energy experts agree that, after taking conservation measures (like insulating your home), solar hot water gives you the best return on your investment.

#### Protection from Rising Energy Costs

With all the uncertainty over future energy costs (the cost of oil doubled in 2009), perhaps the best reason to invest in solar hot water now is for the peace of mind. Think of it as "prebuying" up to 85% of your hot water for the next 20 or more years. How many opportunities exist to cap future energy costs in this way?

#### Hot Water: the secret "Gas Guzzler"

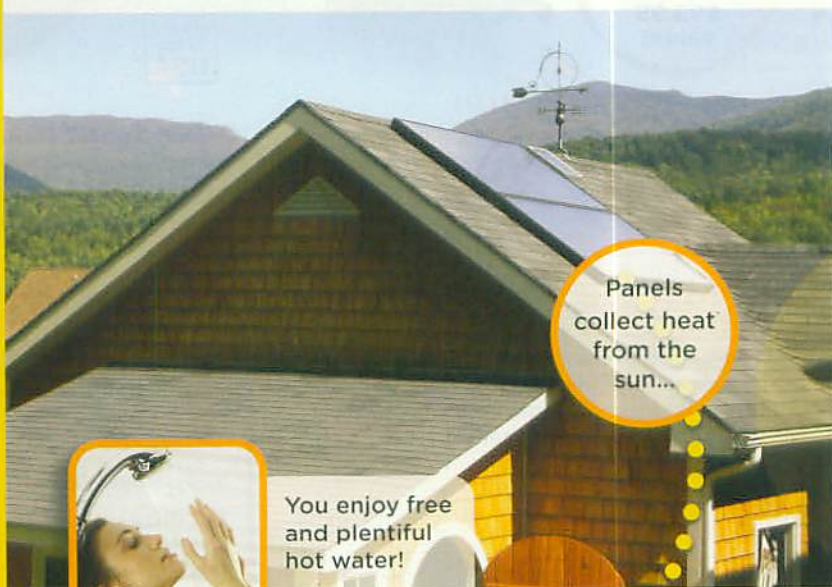
Because it is usually hidden in one or more utility bills, most homeowners are unaware of how much they spend on domestic hot water for washing and bathing. According to the U.S. Department of Energy the average household spends up to 40% of their household energy bill on hot water!

## INTRODUCING SUNWARD™!

*The only solar hot water system designed for easy installation.*

- Proven — over 25 years in the field
- Easy — "quick connect" components
- Complete — everything you need
- Independence — less reliance on oil/gas

With a Sunward™ Solar Hot Water System you can take the energy of the sun and turn it into free hot water. Sunward™ Systems are designed for fast and easy installation, with only the final hook up requiring professional skill. Everything you need comes in one complete package, including a manual with detailed illustrations and step-by-step instructions. Before you know it, you can be generating your own green energy on your property and cutting back on fossil fuel consumption at the same time!



Panels collect heat from the sun...



You enjoy free and plentiful hot water!



The solar heat is transferred to your water system and stored...

[www.SunwardWater.com](http://www.SunwardWater.com)



# HOT WATER?

**FREE  
SUNWARD  
INFORMATION  
KIT!**

see page 19



*Timber Frame Ground-Mount (above) and Roof-Mount Systems (at left) available.*

## \$ Dollars & Sense \$

A Sunward™ Solar Hot Water System pays for itself through energy savings, making it one of the best investments you can make for your home.



### Save more than \$600 every year!

The average American household spends around \$500-\$800/year on hot water. Depending on water usage and geographic location, a Sunward Solar Hot Water System can save you more than \$600 per year in reduced energy costs (at today's energy prices).

### Qualifies for HUGE Tax Credits!

30% of the full cost of your Sunward Solar Hot Water System, including shipping and installation, is offset by a Federal Tax Credit. Plus, there are many states with financial incentives above and beyond what is offered by the federal government

### Increase Your Home Value Instantly!

Studies have shown that home values increase 20 times your annual energy savings gained with the installation of a solar hot water system. Your home can appreciate by \$10K or more instantly!

### Calculate your own savings!

How much you save depends upon your water usage, where you live, the tax credits available in your locale, and more. Our website can help you estimate your total savings based on your input.

Visit us at:

[www.SunwardWater.com/save](http://www.SunwardWater.com/save)



**Start saving money today!**

**Call toll-free: 1-888-545-6623**

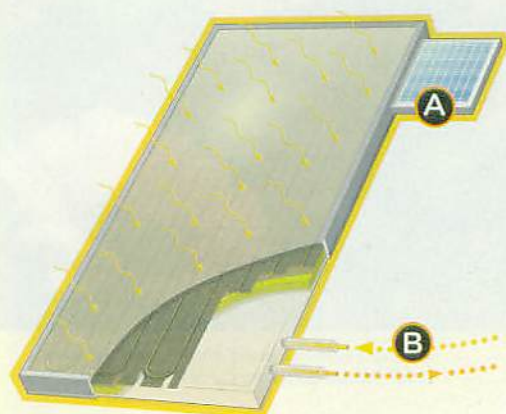


# Exclusive features make Sunward better.

The Sunward™ System uses *quick-connect* components for easy, low-cost installation. **There's no wiring into your household current, or complicated plumbing.** A liquid (food-grade Glycol) is circulated through the solar collectors, absorbing heat from the sun, then routed to the heat exchanger where its heat is transferred to your water.

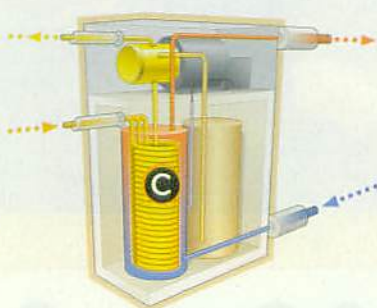
## Easy-Install Sunward Features

- A. A small photovoltaic (PV) solar panel, mounted on the collector, generates all the electricity needed to drive the pump. No outside power required. Plus, the PV panel provides power to the pump only when there is enough sunlight to make hot water!
- B. Flexible, 3/8" copper tubing eliminates the time and expense of cutting and soldering the rigid copper piping used in other systems.
- C. Heat Exchanger is customized to work seamlessly with Sunward Storage Tank, connecting to it in just moments with stainless steel flexible hose.
- D. Sunward Storage Tank connects quickly to your existing system. We provide 90% of the connective plumbing already assembled. Any plumber — even one with no solar experience — can do the final hook up, usually in about 2 hours!



### SOLAR COLLECTORS

capture the sun's heat



### HEAT EXCHANGER

transfers heat to your water supply



### SUNWARD STORAGE TANK

supplements your existing hot water system

## It's a weekend project. And as easy as 1-2-3.

Thanks to its simple design, the Sunward™ Solar Hot Water System costs thousands of dollars less to install than any other system available — even if you have all the the work done by a professional. In fact, 2 people can do everything described below in a weekend, leaving only the final hook up to be performed by a plumber (no more than 2-4 hours work).

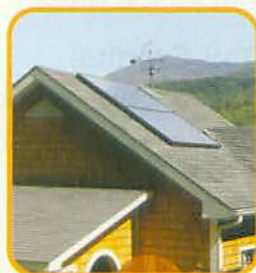
- 1 Install Solar Collectors
- 2 Place the Storage Tank and Heat Exchanger in Position
- 3 Run Flexible Micro-Tubing™ from Solar Collectors to Heat Exchanger



### Installation Options

#### Ground-Mounting

A steel mounting frame comes standard, or you can upgrade to our Timber Frame Kit that can be finished into an attractive shed (as shown). Pre-cut lumber makes the kit easy to assemble.



#### Roof-Mounting

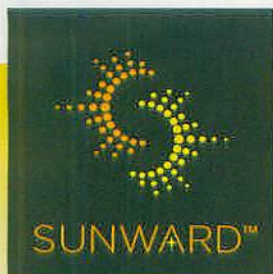
Complete hardware for Roof-Mounting is included in the cost of your Sunward™ System. Because of the added complexity, we do not recommend doing a roof-mount yourself.



# The complete solution from Sunward.

We'll ship you everything you need to start saving up to 85% on your hot water bills!

Most solar hot water systems are a collection of pieces and parts from a multitude of manufacturers. Sunward components, on the other hand, are designed and manufactured to work together seamlessly. And *everything* you need is supplied together in one complete package and shipped directly to you from our factory in Vermont!



## Get Started Today with a FREE Sunward Information Kit!

### Here's What You'll Receive:



**OUR SUNWARD CATALOG** explaining the incredible efficiency of solar hot water...plus full details about the Sunward System



**AN INFORMATIVE DVD** including details of how quickly a Sunward System will pay for itself...plus feedback from Sunward Owners



**A SITE EVALUATION QUESTIONNAIRE** that will tell you how suitable your location is for capturing the sun's energy



**A FREE PHONE CONSULTATION** with one of our solar hot water specialists...to analyze your Site Evaluation Questionnaire data and to determine your annual savings. You can also ask any questions you may have about solar hot water and the Sunward System. Other companies charge \$150 or more for this service!

**It's all Free and there's no obligation!**



**Call TOLL-FREE:**  
**1-888-545-6623**

**or Visit:**  
**[www.SunwardWater.com](http://www.SunwardWater.com)**

**or Mail the attached card**  
(see pages 16 & 17)



# TURN YOUR PICKUP TRUCK INTO A DUMP TRUCK!

You'll never  
unload your  
truck by  
hand again!

**NEW!**



**1★ YEAR  
HANDS-ON  
TRIAL**

MADE  
in the  
USA

Introducing the  
**DR® DUMP-PRO®**

- Fits most short- and long-bed pickup trucks
- Powered by up to a 4000 lb. capacity electric winch
- Steel-reinforced polyethylene bed never rusts or dents

With the DR® DUMP-PRO® your pickup truck will become a versatile workhorse that saves you time...and saves your back! In seconds you can unload up to 3000 pounds (or two cubic yards) of firewood, topsoil, gravel, mulch, stones, grain, and more. With the flip of a switch the remote control lets you quickly dump any load. Best of all, the DR® DUMP-PRO® is easy to install and can be removed when you don't need it. So stop hand unloading. Get more out of your truck and get more done with the DR® DUMP-PRO®!

## SAVE YOURSELF HOURS OF UNLOADING TIME!

Thanks to a remarkable 60-degree dumping angle, EVERYTHING that goes into the DUMP-PRO® comes out with the flip of a switch...right where you want it.

